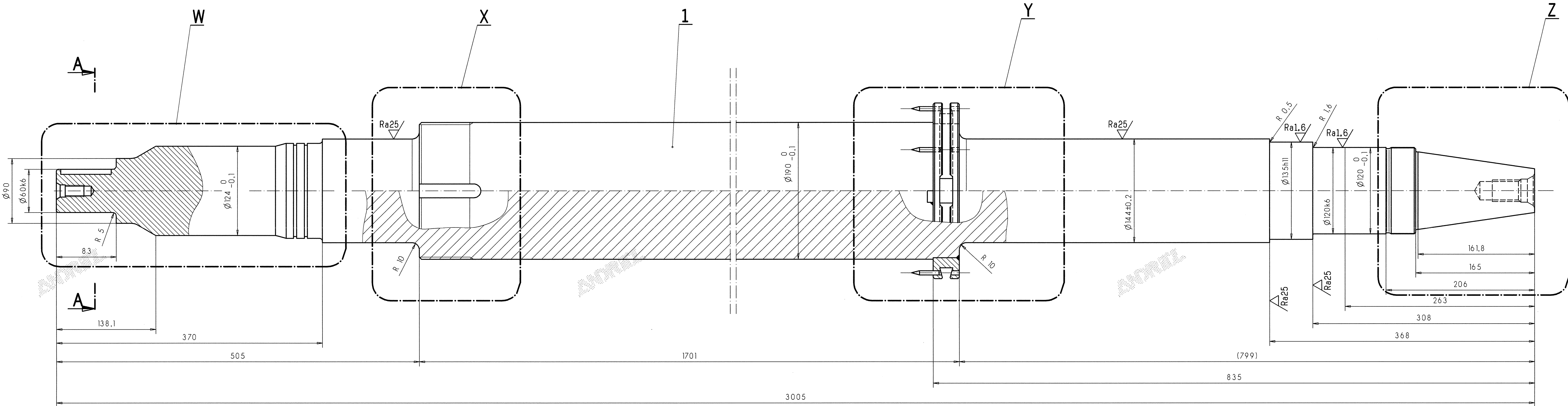


Ra6.3/ (Ra25/ , Ra1.6/)



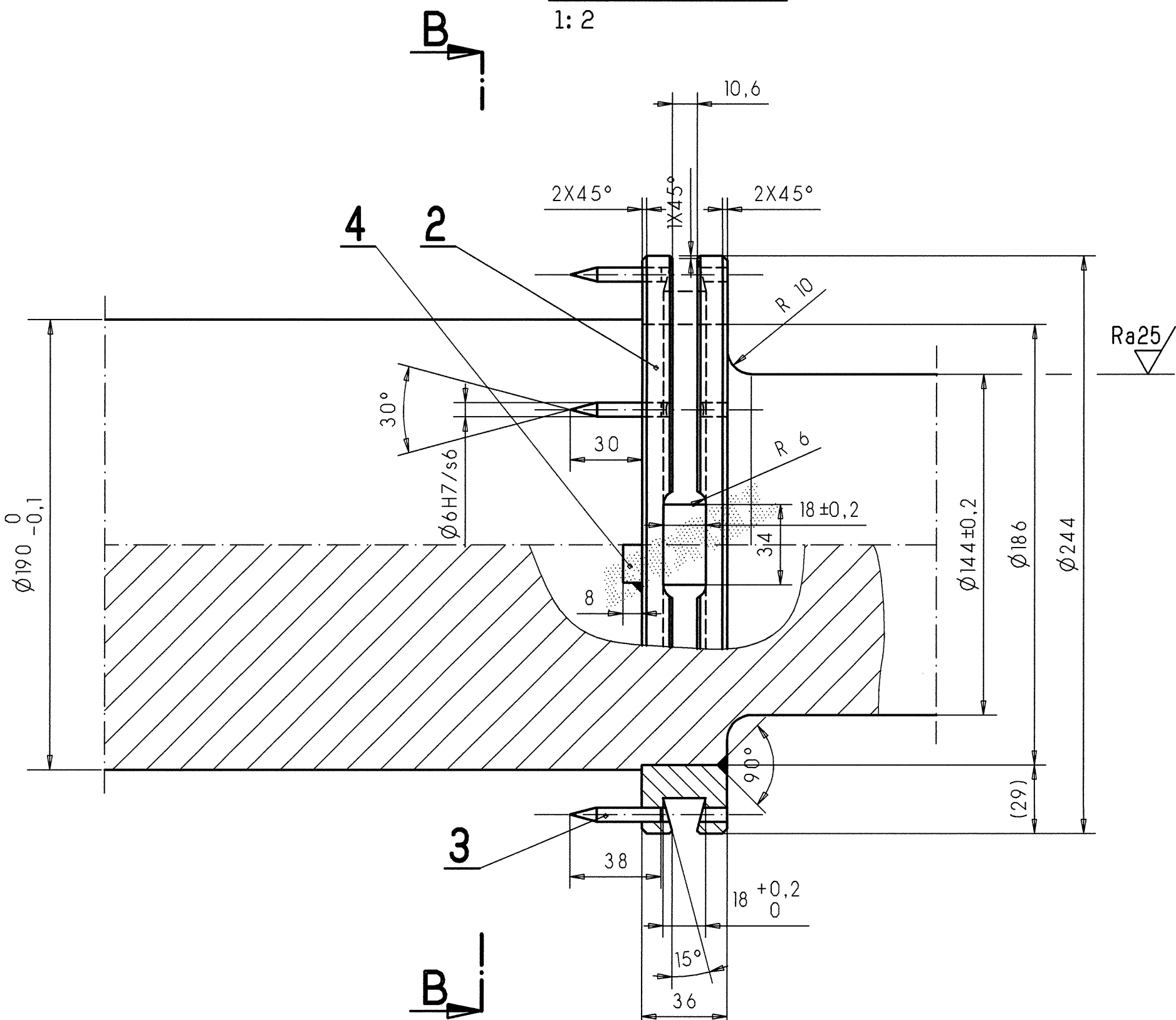
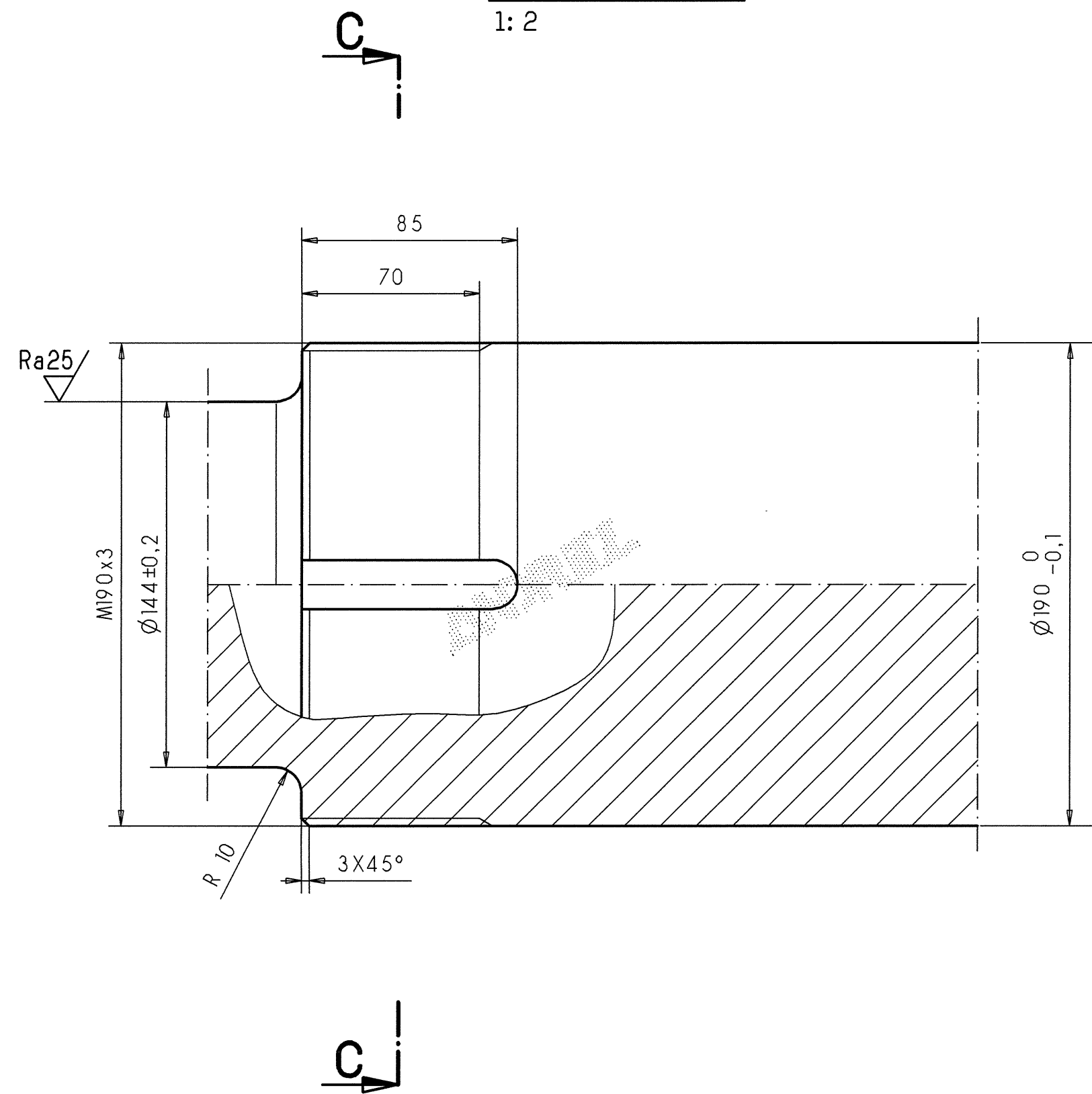
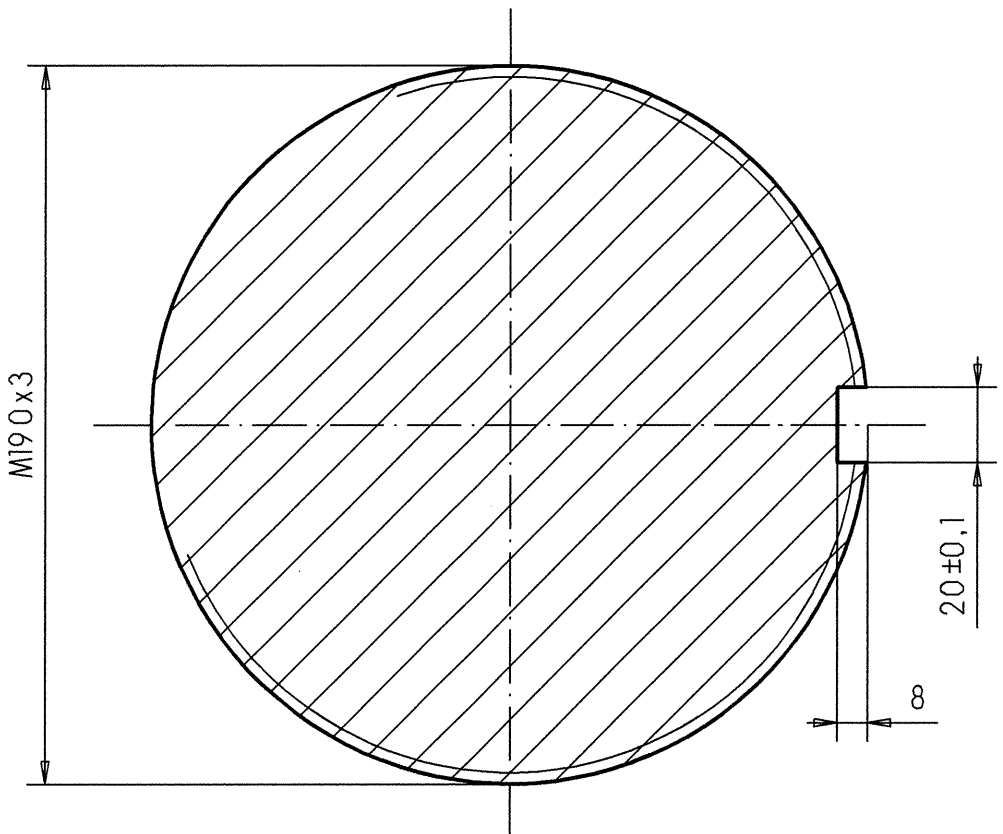
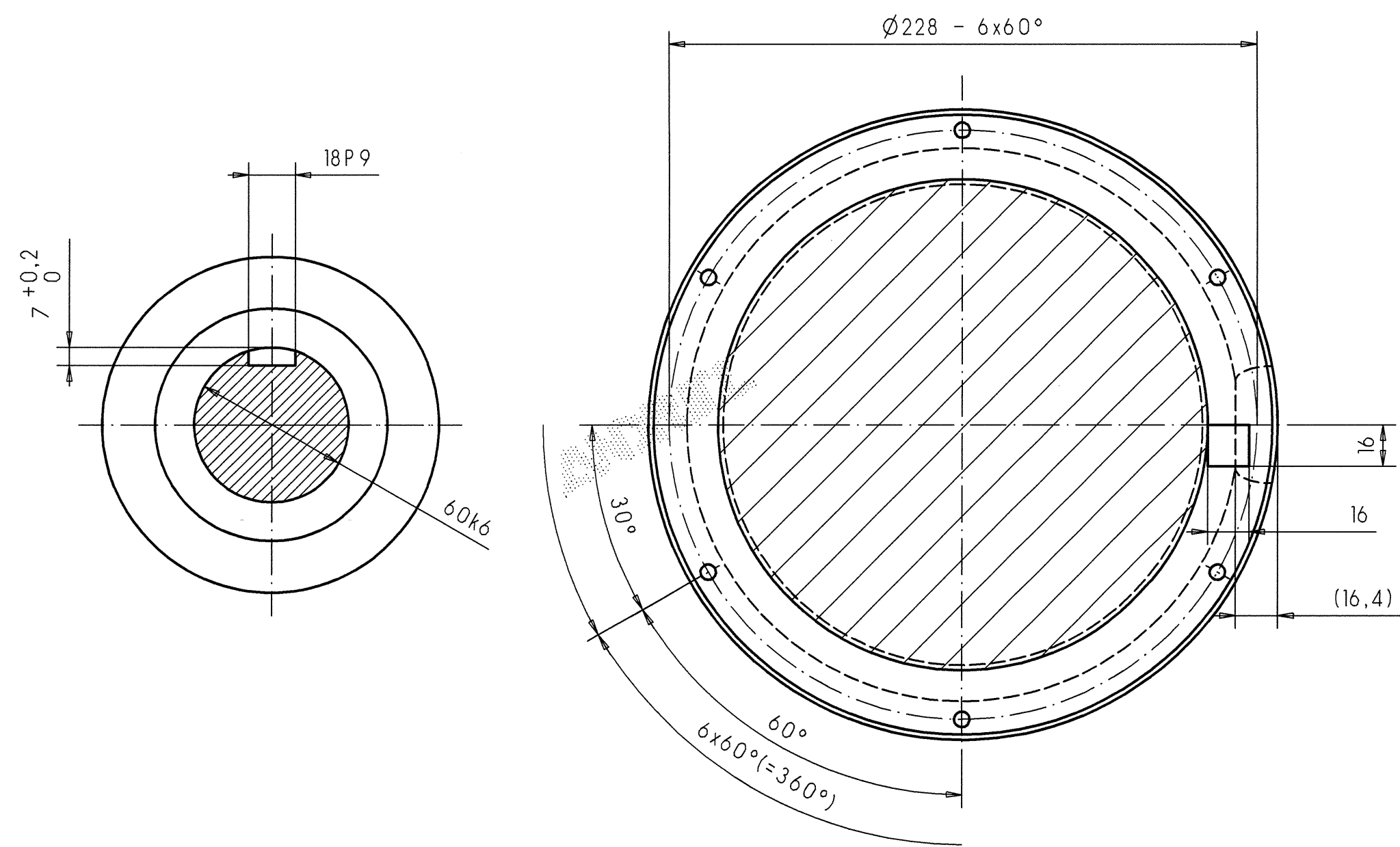
section A-A
1: 2

section B-B
1: 2

section C-C
1: 2

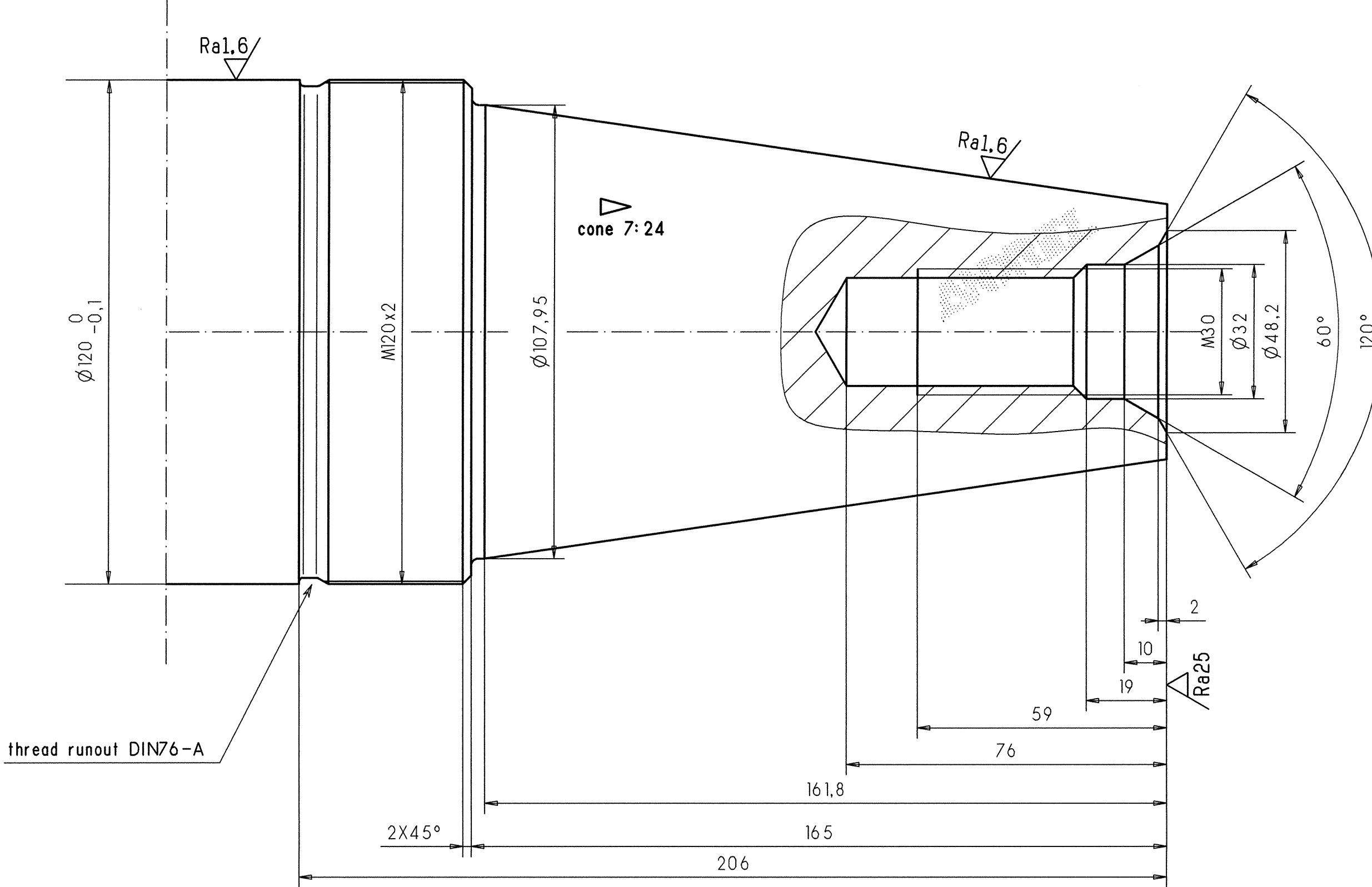
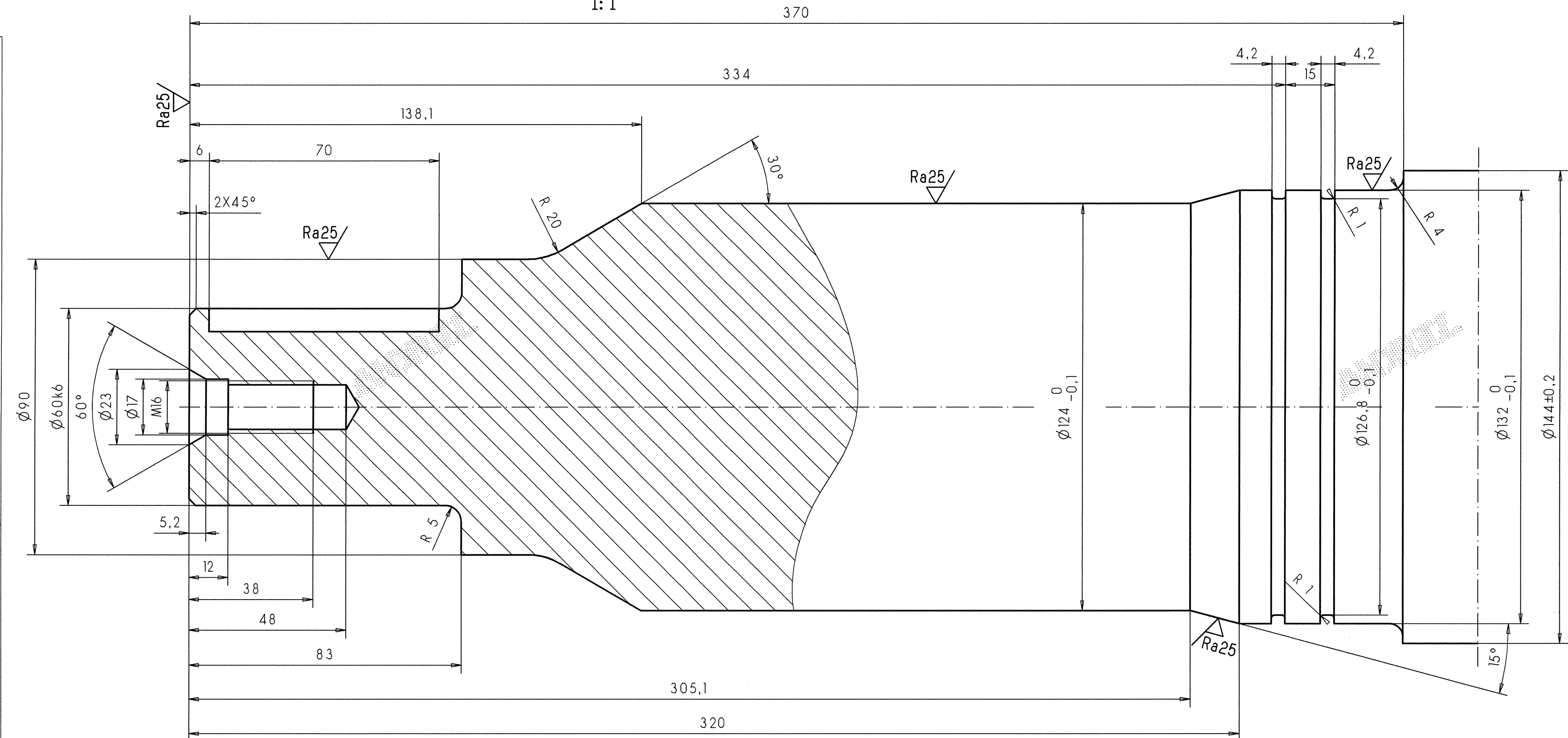
detail X
1: 2

detail Y
1: 2



detail W
1: 1

detail Z
1: 1



COLD ROLLING STAINLESS STEEL PLANT

DWG No. SHEET OF ASSEMBLY DWG No. MARK
DWG No. PAGE REV.

Revision	Date	By	Check	Approved	Signature	Stamp	Signature	Stamp
1	2004-12-09	W. H. N.	W. H. N.	W. H. N.	W. H. N.	W. H. N.	W. H. N.	W. H. N.

ANDRITZ
ANDRITZ AG WEN AUSTRIA

Part Number	Part Name	Part Description	Part Material	Part Weight	Part Length	Part Width	Part Height	Part Thickness	Part Tolerance	Part Finish	Part Marking	Part Drawing	Part Revision	Part Date	Part By	Part Check	Part Approved	Part Signature	Part Stamp
92-97538-0	WELLE FUER BUERSTWALZE	SHAFT FOR BRUSH ROLL	Stainless Steel	515 kg	3005 mm	190 mm	144 mm	120 mm	106 mm	102 mm	60H6	0 OK 94357	0 OK 94357	15. Juni 2005	W. H. N.	W. H. N.	W. H. N.	W. H. N.	W. H. N.

bevel edges

not specified radii R=1,6 mm

static and dynamic balanced!
admissible unbalance max. 2,5 mm/g (Rpm)
(Revolutions max.: 1000 Rpm)